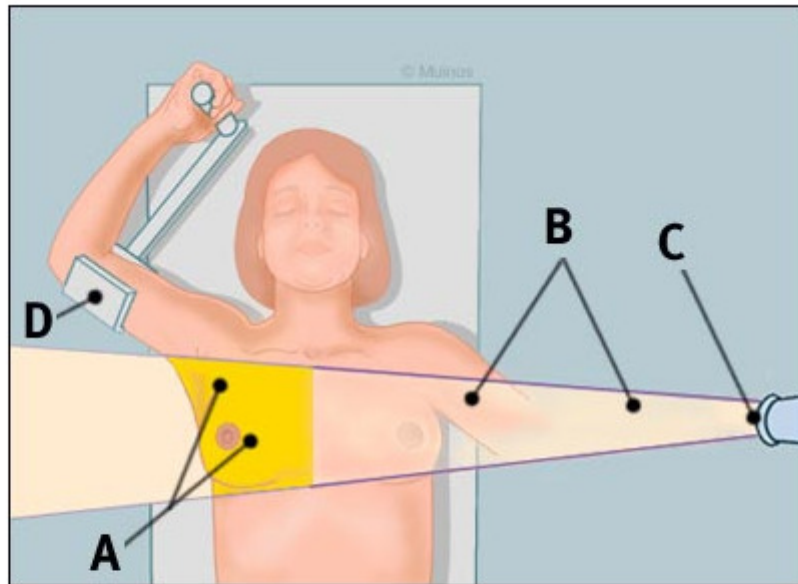
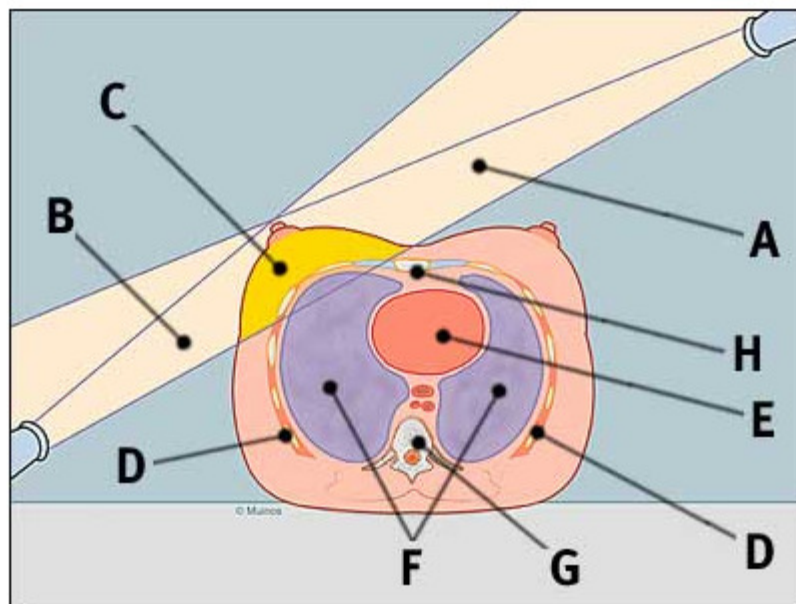


Radiation Therapy for Breast Cancer



- A. Breast
- B. Radiation beam
- C. Radiation source
- D. Support for arm



- | | |
|-------------------|-------------------------|
| A. Radiation Beam | E. Heart |
| B. Radiation Beam | F. Lungs |
| C. Breast | G. Back Bone
(Spine) |
| D. Ribs | H. Breast Bone |